



- Installation and wiring of luminaire must be in accordance with all applicable local codes.
- Installation, inspection, and maintenance of luminaires should be performed by a qualified electrician.
- DO NOT make or alter any open holes in the luminaire. Do not modify the luminaire.
- DO NOT install damaged product.
- Make sure electrical power is OFF before and during installation and maintenance.
- Make sure the equipment is properly grounded.
- Make sure the supply voltage is same as the rated fixture voltage.

#### Tracking and luminaire:

First trunking rail should have one side connecting plate&last trunking rail with no connecting plate on both sides, then fix the Luminaire to trunking rail then lock holder, then keep end caps at both sides.



#### Step 1 Mounting Suspension

Adjust length of suspension cord:  
a. press down Hexagon bolt;  
b. Pull in/out cord to adjust length

Click in mounting clip into trunking rail

#### Step 2 Connecting Power Supply

Put in conduit with cable inside and pull up conduit gland to lock

Connect wires according labeling on wires to feed in connector then connect to connector in trunking rail

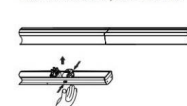
#### Step 3 Connecting Trunking Rail

Both trunking rails should keep in perfect position then push to click



#### Step 4 Mounting Luminaire

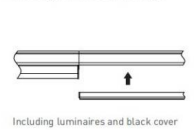
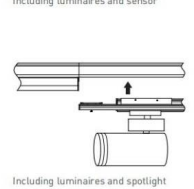
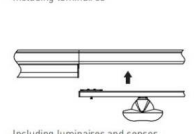
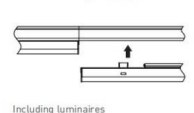
Slide knob to select phase L1/L2/L3



Make sure male & female connectors in right position then fix the luminaire to trunking rail



#### Step 5 LED linear lighting system

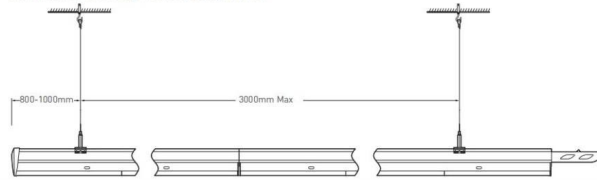


#### Wire diagram of triple circuits function



#### Pendant and mounting installation

Starting Installation distances point should be 800 mm to 1000 mm, then in between 1st & 2nd point should be 3000 mm max



#### Four options for installation



Safety notes:  
Installation should be performed only by  
qualified electrician .

- Make sure no voltage while installation .
- Connect cable wires according to wire labeling.
- Max current should not exceed 16A in one power feed in circuit.



LED linear lighting System composition

#### Terminal module:

Terminal module can be independently installed as  
a single unit, it also can be connected at end of one  
linear light row.

